

2. 产品图纸 (Product Drawings)

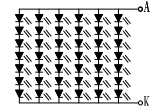
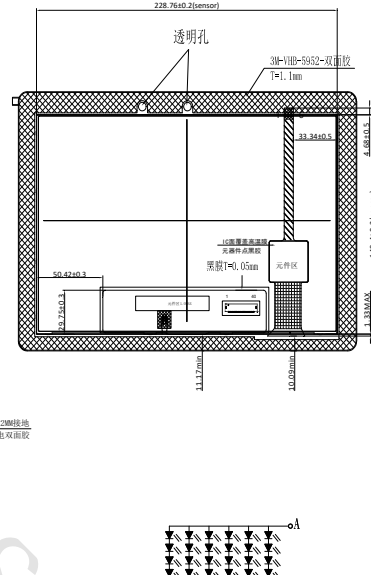
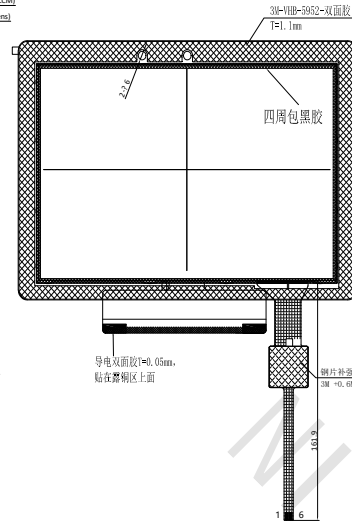
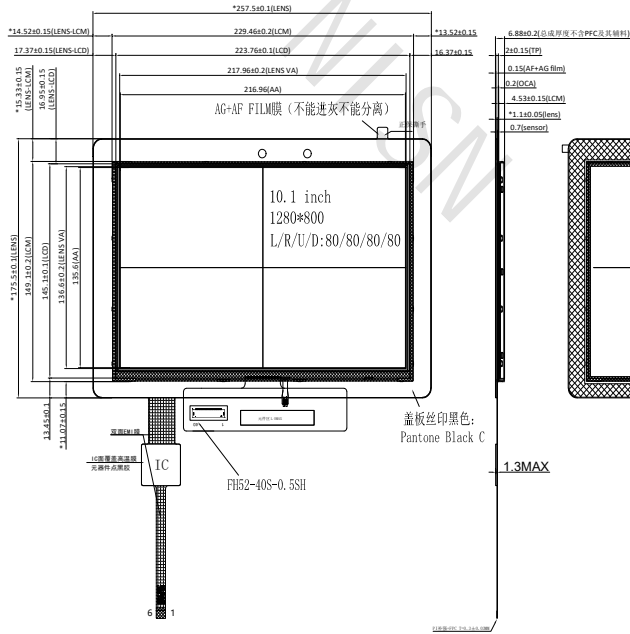
? RoHS ? HF ? REACH

正视图

侧视图

背视图

背视弯折图



LED CIRCUIT DIAGRAM:
IF=360mA; VF=19.6~22.4V

- 技术要求
- 1、结构类型: G+G+OCA全贴LCM;
 - 2、IC型号: GT928 (抗干扰强, 恶劣工况不能失效);
 - 3、支持触摸点数: 多点触控, 精度度: ±1mm@10mm;
 - 4、工作条件: DC 2.8V~3.6V, IIC通讯 3.3V;
 - 5、表面硬度: LENS>6H; AG AF F11m>3H; 透光率: >86%;
 - 6、工作环境温度: -30℃~85℃ (不出现拖影); 储存环境温度: -40℃~85℃;
 - 7、亮度: 900cd/m²;
 - 8、显示模组四个侧边沿与玻璃屏的贴合部位需连续打胶加强;
 - 9、所有材料符合"RoHS"标准;
 - 10、ESD 空气: ±8KV;
 - 11、未标注尺寸均以2D图为准;
 - 12、LENS材质为钢化玻璃, 材质: 旭硝子1.1MM;
 - 13、落球测试标准: 64g钢球高度40cm自由落下撞击显示屏组件3次, 显示屏组件不裂不碎;
 - 14、未标注公差: ±0.20mm; 标注 * 尺寸为重点管控尺寸;
 - 15、分辨率: 1280*800; 坐标原点: 左上角; 触摸中断: 下降沿触发;
 - 16、色温: 样品签样实测值±500.

LVDS PIN	LOGIC
PIN 1	NC
PIN 2	VDD. Max400mA
PIN 3	VDD. Max400mA
PIN 4	NC
PIN 5	RESET
PIN 6	STBYB
PIN 7	GND
PIN 8	RXIN0-
PIN 9	RXIN0+
PIN 10	GND
PIN 11	RXIN1-
PIN 12	RXIN1+
PIN 13	GND
PIN 14	RXCLKIN-
PIN 15	RXCLKIN+
PIN 16	GND
PIN 17	RXIN02-
PIN 18	RXIN02+
PIN 19	GND
PIN 20	RXIN3-
PIN 21	RXIN3+
PIN 22	GND
PIN 23	SCL
PIN 24	SDA
PIN 25	GND
PIN 26	NC(CS)
PIN 27	NTC_GND
PIN 28	SEI.B
PIN 29	NC
PIN 30	GND
PIN 31	LED-
PIN 32	LED-
PIN 33	L/R
PIN 34	U/D
PIN 35	NTC
PIN 36	NC
PIN 37	VDD_OTP
PIN 38	NC
PIN 39	LED+
PIN 40	LED+

I2C Interface	
1	RESET
2	INT
3	VDD 3.3V
4	SDA
5	SCL
6	GND

REVISION RECORD		DATE	NISIN SHENZHEN NISIN OPTOELECTRONICS CO., LTD	
△			DRAW TYPE : ASSY-Outline	
△				
△			DRAWN	DATE 20241106
△			CHECKED	DATE
△			APPROVED	DATE
			DRAW NO: NSI010WX4001BZ01	SCALE : N.T.S.
			Ver. : V00	UNIT : mm
			PRO.(S)	PRO.(S)
			DATE	SHEET : 1/1